

FEATURES & BENEFITS

- Simple point-and-click provisioning for fast connectivity
- Graphical user interface for full visibility of over 100,000 ports
- Dashboard management to quickly isolate problems
- Connection Manager to build, store, schedule & execute changes
- Secure client/server architecture offers redundancy and scalability
- Local and remote access of up to 128 concurrent users
- Flexible role-based access for group and domain control
- Full alarming and activity logging for simple tracking or reporting

FUNDAMENTAL VALUE

SAVE TIME

- Moves, adds or changes
- Planning or troubleshooting
- Record keeping

INCREASE UTILIZATION

- Data center equipment
- Test or monitoring tools
- Personnel productivity

REDUCE COSTS

- Capital expenses
- Operating expenses
- Power consumption

UCMS™ SOFTWARE UNIVERSAL CONNECTIVITY MANAGEMENT SYSTEM™



Overview

The UCMS™ management and monitoring software simplifies high-performance connectivity and monitoring with point-and-click provisioning and full remote control of any UCS™ 2900 network. Compared to manual patching or complex mesh switching architectures, the software and hardware platforms combine to help network managers and operators save time, increase utilization and dramatically reduce costs. The UCMS™ software manages up to 128 separate switches or over 100,000 meshed ports in a single application. The connections can be managed individually or across groups and domains, while being planned anytime and scheduled for automated operation.

Applications

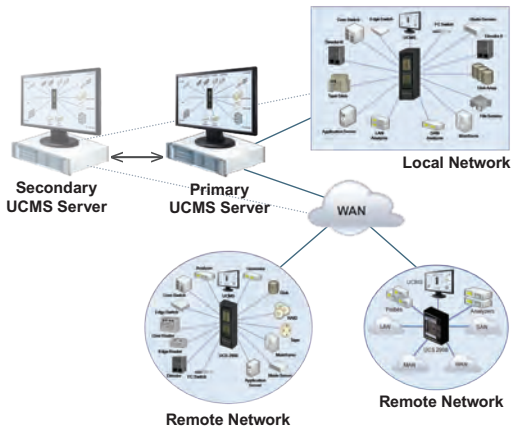
The UCMS™ software and UCS™ 2900 platform solves connectivity and monitoring challenges for a variety of high-performance applications:

- Data center network infrastructure virtualization
- Application service provider network reconfiguration
- Test lab automation
- Network monitoring and tool provisioning
- Federal and high-security networking

THE ONPATH ADVANTAGE



OnPATH Technologies is the leading provider of scalable connectivity & monitoring solutions for high-performance networks. Our solutions offer the highest scalability, most complete security and best integrated diagnostics across the industry. Contact us today for an engineering application review or network consultation.



The Universal Connectivity System™ 2900 and its built-in control system, UCMS™, provide interactive control that assists operators and managers in the path configuration, connectivity, monitoring and troubleshooting of high performance networks.

UCMS™ is a Windows server and Java-based client application providing management of a family of UCS™ 2900 switches from virtually any location. Users are granted password protected access to the 2900 based on their pre-defined role and access privileges, which provides them with a secure client login from anywhere in the world. The UCMS™ Client is not an installed program, which guarantees that the latest version of UCMS™ will always be available to the user during a login session.

The UCMS™ control system includes a graphical topology dashboard, providing users with easy navigation between systems, clear presentation of system configuration and capacity, simple drill-down from the system to the port level and obvious alarm tracking, reporting, troubleshooting and activity scheduling. The UCMS™ topology manager provides a full view of the devices connected and allows for simple drag and drop connections or test access monitoring between devices.

Figure 1: Connection management for table based operation.

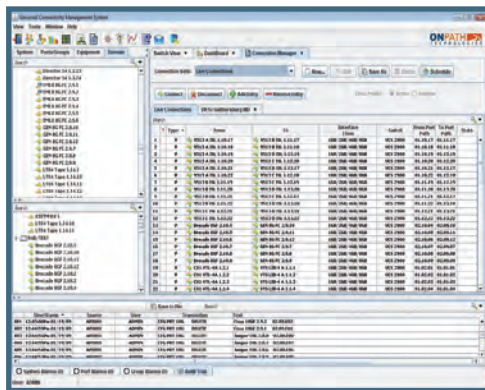


Figure 3: System dashboard for switch statistics

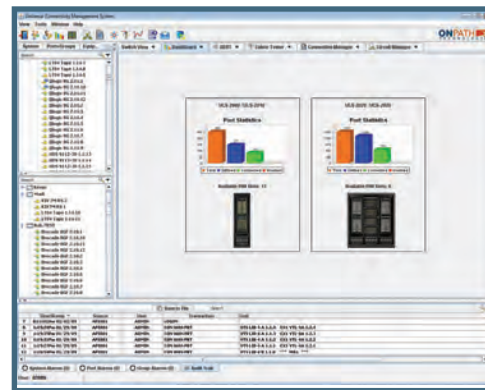


Figure 2: Topology management for graphical based operation

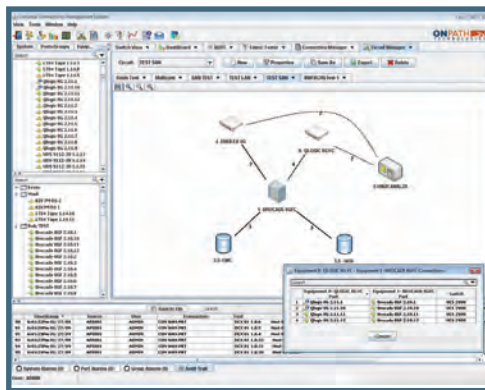
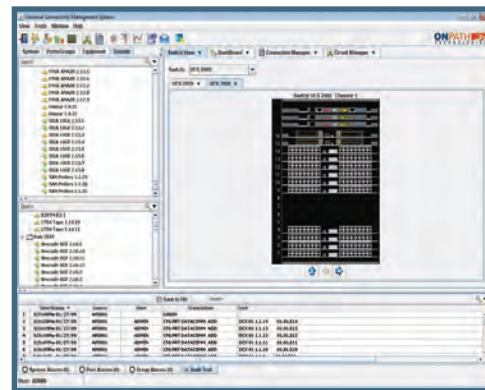


Figure 4: Chassis configuration for port and sub-system detail.



OnPATH Technologies offers full life cycle services to plan, build and care for high-performance networks. All OnPATH products are supported by our 24/7/365 help desk and field technical support services. For more information, please call 877-468-5784 or service.request@onpathtech.com.

ONPATH TECHNOLOGIES

2000 Lincoln Drive East • Marlton, NJ 08053
609.518.4100 • info.request@onpathtech.com
www.onpathtech.com